

# Cloud-Native RADIUS-as-a-Service



Wireless, Wired,  
& VPN



Rad-sec & RADIUS  
Forwarding Support



Easy to Deploy  
& Scale



Zero-Touch  
Maintenance



Fully Cloud-Native



Anti-Flood  
Protection

## Keep out the riff-raff

As a cloud-native platform, the Portnox Cloud requires no hardware and no maintenance whatsoever.

Gain real-time visibility of endpoints trying to connect to your network, plus additional context such as their location and device type.

This applies to managed company devices, BYOD and IoT / OT alike, no matter if they're authenticating via wired ports, WiFi or VPN.

## Access only to those who need it

Define and enforce unique access control policies based on roles, locations, device types and more across your various network access layers.

All the network & endpoint  
security essentials you want.

All in one place.

### REPORTING

- Device visibility
- Guest access history
- Security & compliance adherence

### CONTROL

- Role- & location-based access
- Policy group assignment
- Auto-segmentation of users

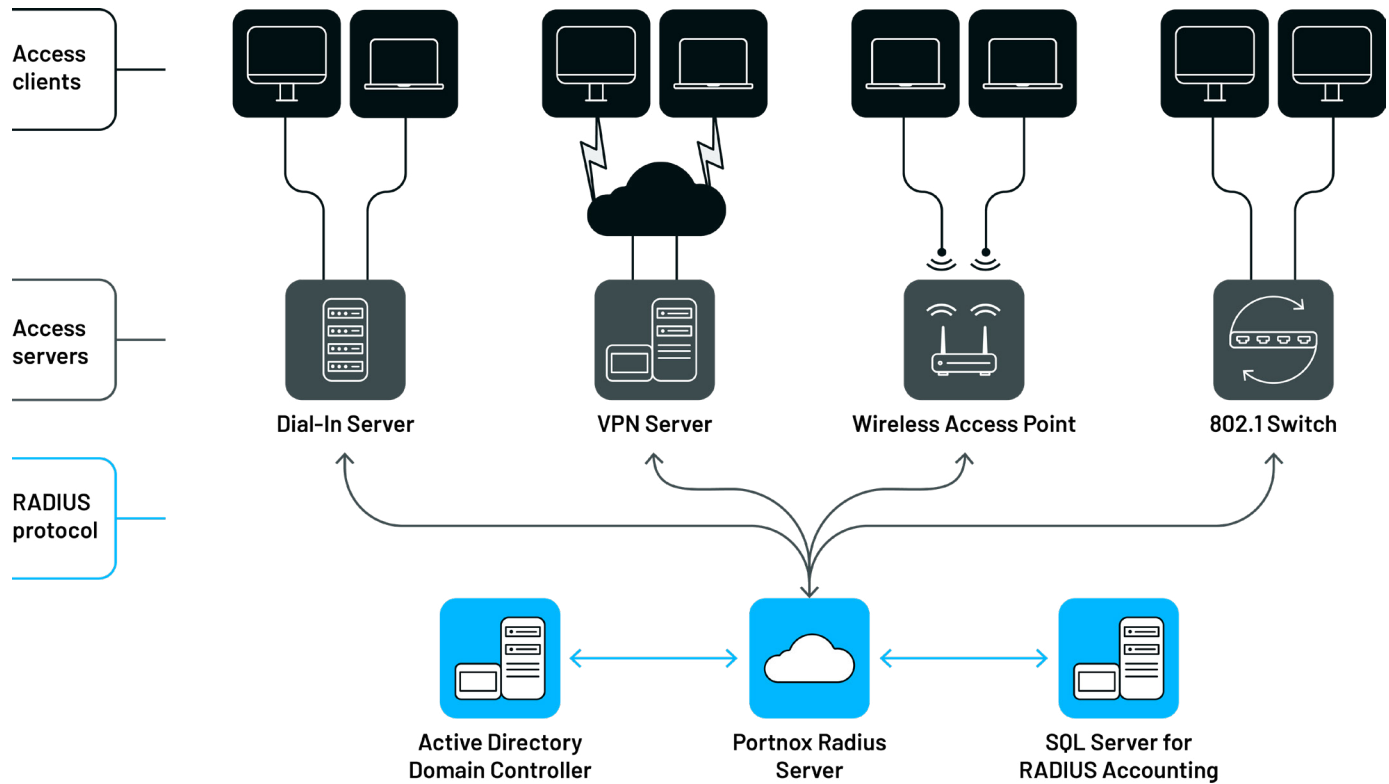
### AUTHENTICATION

- Role-based authentication
- MAC authentication bypass
- 802.1X Authentication

### SECURITY

- One-click cloud RADIUS
- Anti-flood protection
- RadSec support & RADIUS forwarding

## How It Works



**Try RADIUS**  
Pricing details [here](#).

### About Portnox

Portnox offers cloud-native network and endpoint security essentials that enable agile, resourceconstrained IT teams to proactively address today's most pressing security challenges: the rapid expansion of enterprise networks, the proliferation of connected device types, and the increased sophistication of cyberattacks. Hundreds of companies have leveraged Portnox's award-winning security products to enforce powerful network access, endpoint risk monitoring and remediation policies to strengthen their organizational security posture. By eliminating the need for any onpremises footprint common among traditional information security systems, Portnox allows companies – no matter their size, geo-distribution, or networking architecture – to deploy, scale, enforce and maintain these security policies with unprecedented ease.

[www.portnox.com](http://www.portnox.com)